



# SKYVILLA

YOUR CASTLE IN THE SKY



SkyVilla sits at the north coast of the exclusive D' Island Residence, a development like no other in the Klang Valley.

Set on a 175 acre island in the middle of a pristine lake in Puchong, D' Island Residence is at once cut off from civilisation yet truly in touch with what matters. A life here means privacy and reflection, with modern conveniences. City living, without the stress. And the feeling of being on a holiday everyday, even when you're at home.

Here, on your little island away from the world, you really can have it all.

## SKYVILLA

*Island Retreat Urban Charm*





SKYVILLA

# A RESORT IN THE CITY

From morning breezes to lazy evenings, alfresco dining to drinks by the waterfront, a life at SkyVilla, and in the unique D' Island Residence development, will make staying at home feel just like a vacation.

From your plush 3-bedroom apartment, you'll enjoy a panoramic view of the beautiful surrounds, while just downstairs you'll find an unrivalled array of 60 resort-style facilities to cater to your every need, including sports facilities, relaxation corners, a cafe, an exclusive clubhouse just a short walk away and a network of soothing and peaceful pathways designed to deepen your connection with the nature that surrounds you.

This is your resort in the city, and you'll feel like never leaving. When you do have to, though, you'll only be a short 5-10 minute drive away from everything that matters, including international and local educational institutions, hospitals, large retail outlets, supermarkets and public transport facilities.

## BUILDING SPECIFICATIONS

A	STRUCTURE	Reinforced Concrete Framework						
B	WALL	Reinforced Concrete Wall / Cement Sand Bricks						
C	ROOF COVERING	Reinforced Concrete Flat Roof / Metal Decking						
D	CEILING	Plaster Ceiling / Skim Coat						
E	WINDOW	Aluminium Frame Fixed / Top Hung / Casement / Sliding Glass Window Aluminium Louvered Panel						
F	DOORS	Main Entrance – Fire rated Flush Door Bedrooms / Bathrooms – Flush Door Balcony – Aluminium Frame Sliding Door						
G	IRONMONGERY	Quality Lock Sets						
H	WALL FINISHES	Bathroom	-	Ceiling Height Tiles				
		Kitchen	-	1.8m Height Tiles				
		General	-	Plaster & Paint				
I	FLOOR FINISHES	Foyer / Living / Dining / Kitchen / Bedrooms / Bathrooms	-	Tiles				
		Balcony / Terrace / Yard	-	Tiles				
		AC / Others	-	Cement Render				
J	SANITARY & PLUMBING FITTINGS	Type		A1	A2	B1	B2	B3
		Wash Hand Basin	-	2	2	2	2	1
		Shower Rose	-	2	2	2	2	1
		Water Closet	-	2	2	2	2	1
		Water Tap	-	1	1	1	1	
		Kitchen Sink	-	1	1	1	1	
K	ELECTRICAL INSTALLATION	Lighting Point	-	19	19	22	21	22
		13A Power Point	-	15	15	15	15	16
		15A Water Heater Point	-	2	2	2	2	2
		Ceiling Fan Point	-	5	5	5	5	5
		FWS Point	-	1	1	1	1	
		TV Point	-	2	2	2	2	2
		Distribution Board (Single Phase)	-	1	1	1	1	
		Door Bell Point	-	1	1	1	1	
		Air-Conditioner Point (c/w Piping)	-	4	4	4	4	

Disclaimer: Whilst every reasonable care and effort has been taken, all measurements and specifications are approximate. All plans and specification information contained herein may be subject to change as required by the Authorities / Engineer / Architect, and the Developer and / or Landowner (where applicable) shall not be held responsible for any inaccuracy.





Entrance view



Drop off area



Foyer



Grand lobby



Games room



Games room



Swimming pool



Kids' extreme play & slide



Lighting garden & maze garden



Café



Reading room



Indoor gymnasium



Meditation room



Outdoor gymnasium



Yoga / Aerobic / Tai-chi deck



Lofty garden social space



Barbeque garden



# ELEVATE YOUR EXPECTATIONS

Below your residence in the sky, you’ll find every facilities your majesty may desire.

## FACILITIES & LANDSCAPE

### GROUND FLOOR

Management office  
Grand lobby  
Waiting lounge  
Surau  
Laundry  
Shop

### Tower 1

Lobby  
Foyer  
Waiting lounge

### Tower 2

Lobby  
Foyer  
Waiting lounge  
Games room - table air hockey  
- foosball  
- table tennis  
- darts

### Outdoor

Linear garden  
Jogging track

### LEVEL 1

Kindergarten  
Utility room  
Semi indoor playground  
Games room - carom  
- pool table  
- darts  
- kids pool table

### LEVEL 2

Indoor hardcore gym  
Indoor gymnasium  
Aerobic room  
Dancing room  
Meditation room  
Café  
Changing lounge  
Sauna

Multipurpose hall /  
Badminton court  
Utility room  
Wifi room  
Reading room  
Kids gym  
Kids extreme play  
Play slide

Main pool  
Kids pool  
Sun lounge  
Waterplay area  
Outdoor shower  
Jacuzzi  
Gazebo  
Futsal court /  
Half basketball court  
Lighting garden  
BBQ garden  
Maze garden  
Adult basketball with  
wall mural  
Kids basketball with  
wall mural

### LEVEL 3

Jogging track  
Playground  
Outdoor gymnasium  
Silver station  
Yoga deck  
Aerobic deck  
Tai chi deck

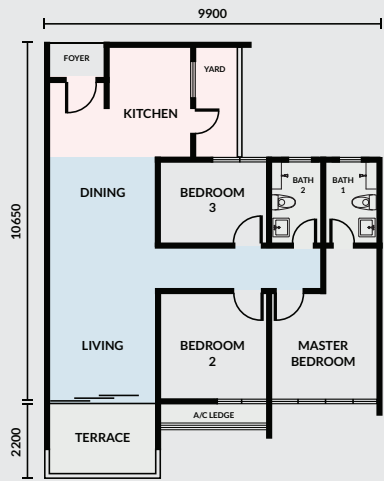
### LEVEL 11 & 12

Lofty garden social space  
Swing chair patio

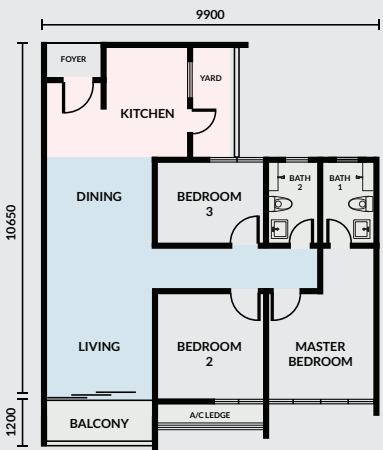
### ROOFTOP

Mini Playground  
Reflexology path  
Sky Barbeque  
Sky hammock  
Sky dining  
Sky gym  
Kids basketball with  
wall mural  
Seating corner  
Viewing deck

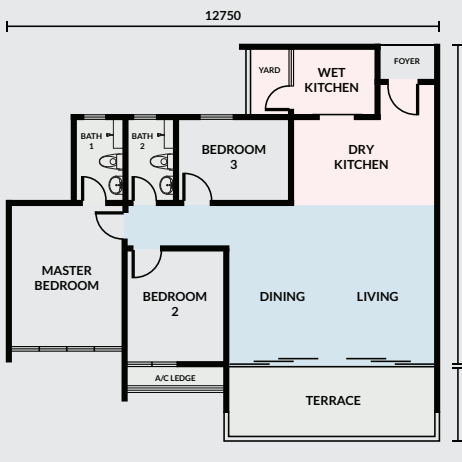
## FLOOR PLANS



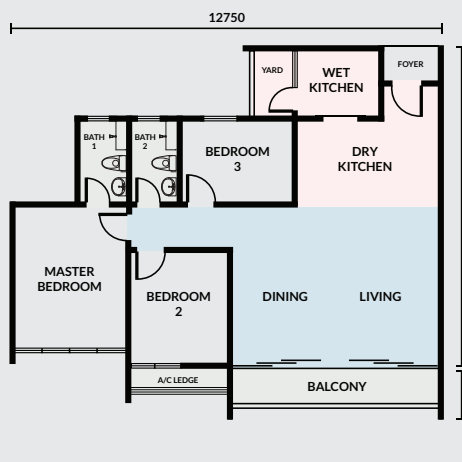
A1: 1,061 sq.ft



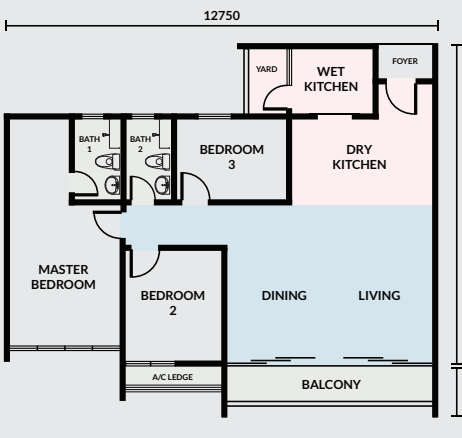
A2: 1,026 sq.ft



B1: 1,218 sq.ft



B2: 1,151 sq.ft



B3: 1,203 sq.ft

# YOUR CASTLE IN THE SKY

## WELCOME TO THE HIGH LIFE

Like a king in his castle, life at SkyVilla is one of fine living and even finer views.

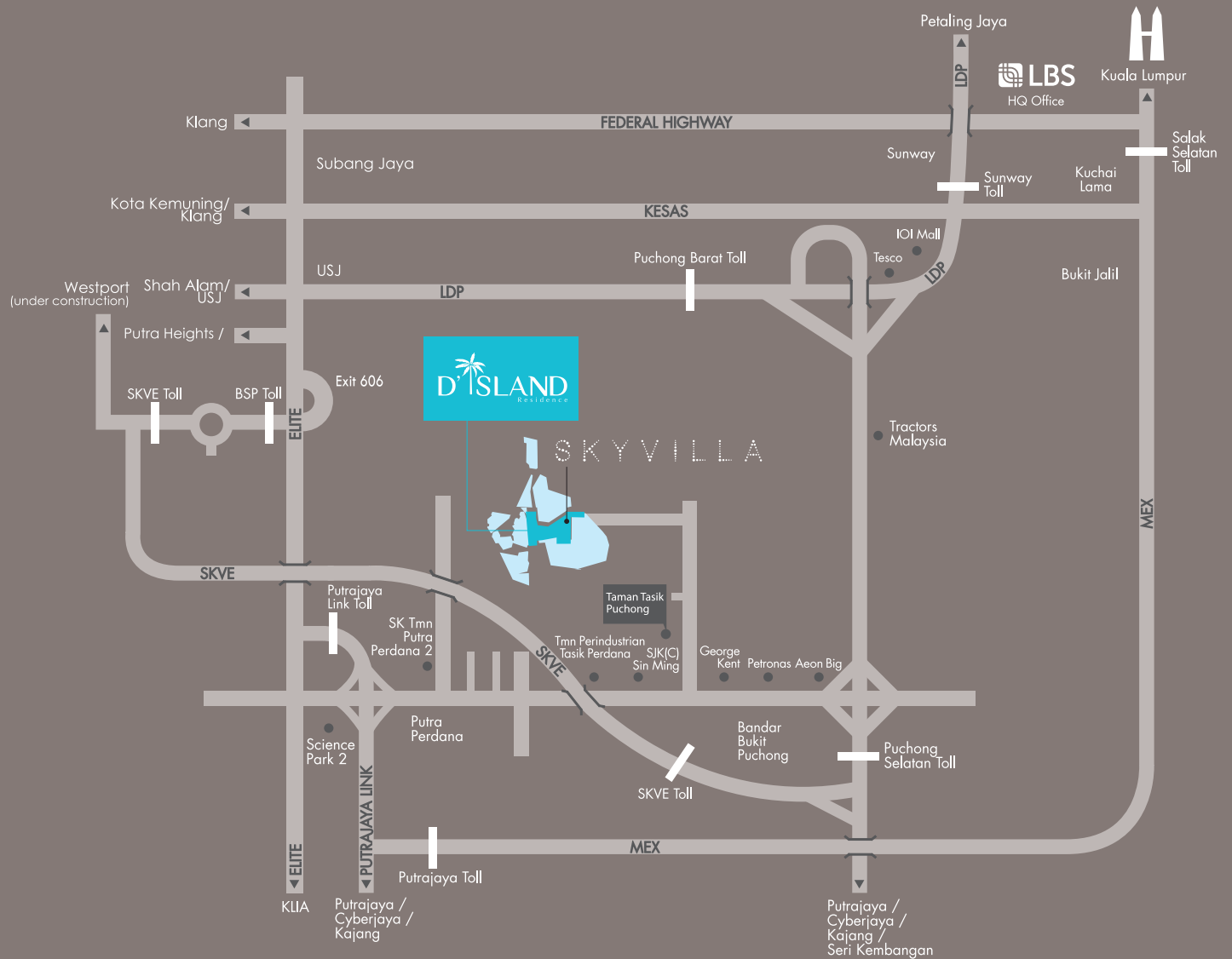
You'll wake every morning cocooned in one of Puchong's most prestigious neighborhoods, encircled by the natural beauty of pristine lakes and only a short distance from the modern grandeur of Putrajaya and Cyberjaya; truly at the heart of the valley.

And, to protect your treasured home, you'll benefit from stringent security standards that safeguard the ones that matter. In addition to the natural safety of being surrounded by water, the entire D' Island township offers 24 hour CCTV surveillance which supplements your very own security system here at SkyVilla, meaning you can be sure that no expense is spared in looking after those who matter.

All this means that SkyVilla is a true castle in the sky for you and your loved ones. A fortress for your future.

## ACCESSIBILITY & LOCATION

- 16km to USJ / Subang Jaya
- 19km to Putrajaya
- 25km to Mid Valley
- 35km to KLCC



## CONTACT US

Claim your place in the idyllic  
enclave of SKYVILLA today

Call 1700-81-8998

[www.d-island.com.my](http://www.d-island.com.my)